



Public Health
England



A new infection has been detected in Wuhan, China

(Novel Coronavirus)

If you have been to Wuhan or China, in the last 14 days and develop **ANY** of these symptoms, contact a healthcare professional

Any of



Cough



**Runny
nose**



**Sore
throat**



Fever



**Difficulty
breathing**

If you develop symptoms within 14 days of leaving China, contact a healthcare professional for free advice and treatment, by calling +350 2007 2266 or the PCC, and tell them that you have travelled to Wuhan or China.



Public Health
England



一种新型感染在中国武汉被发现

(新型冠状病毒)

如果您在过去14天内去过中国武汉, 并且出现上述任何症状之一, 请与医疗保健专业人员联系。

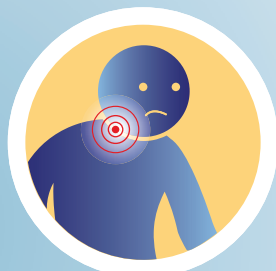
任何之一...



咳嗽



流鼻水



喉咙疼



发烧



呼吸困难

如果您在离开中国后的14天内出现症状, 请致电+350 2007 2266 或您的全科医生, 与医疗保健专业人员联系以获取免费建议和治疗, 并告诉他们您曾去过武汉。